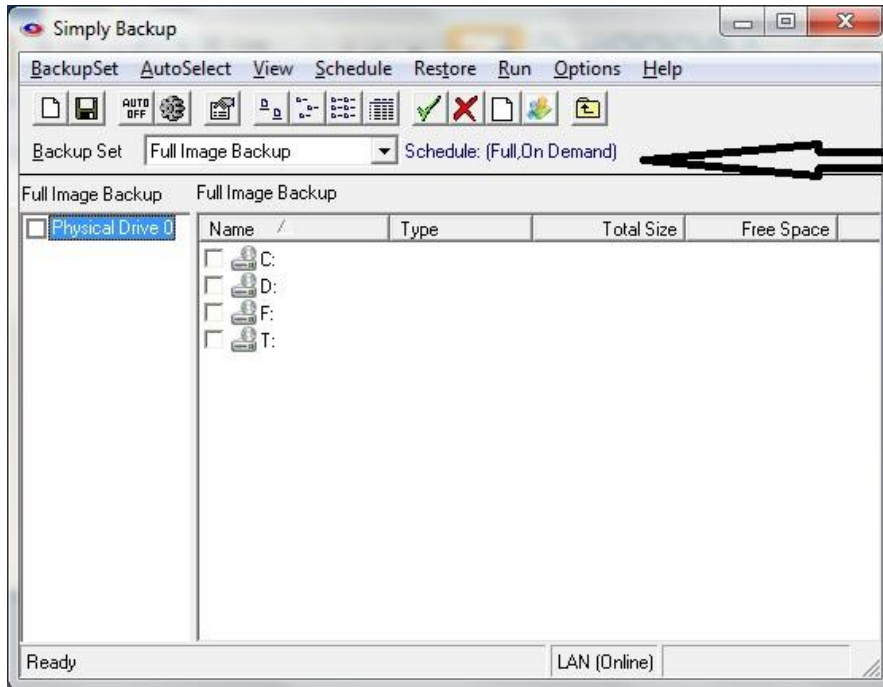
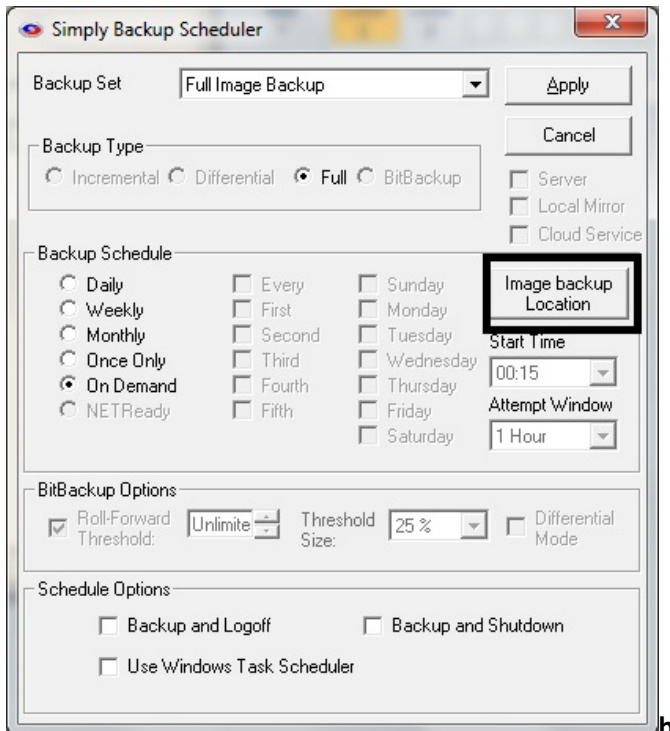


**Full image backup procedure:**

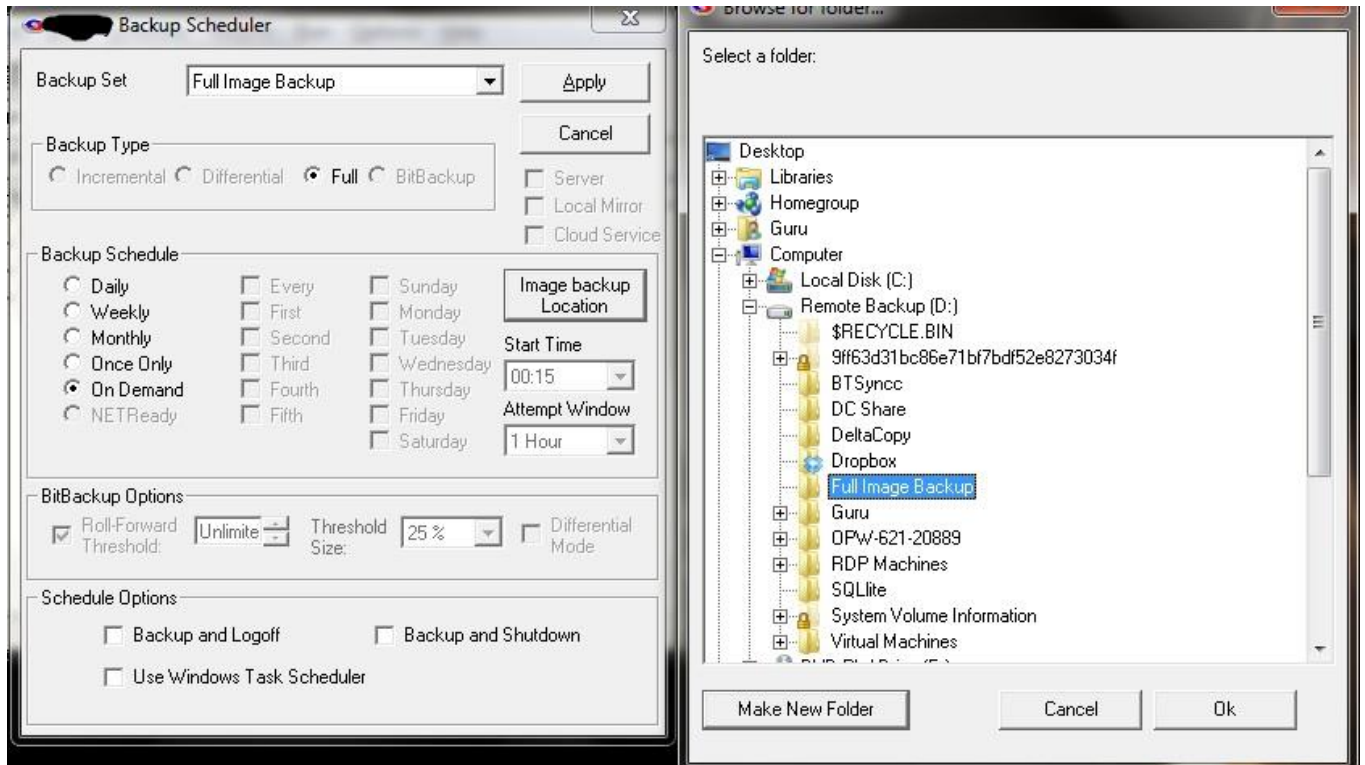
- 1. Select the Backup set which will be available by default on the client**



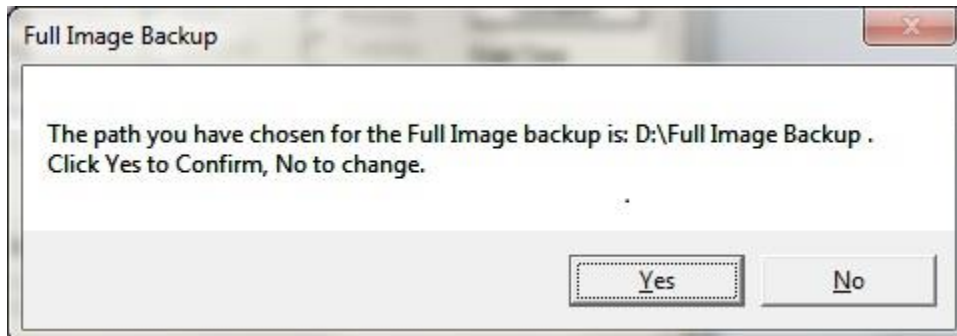
- 2. Go to Schedule--Backup Schedule. NOTE:: By Default "Full Image Backup" will do full backup only.**



### 3. Now Click on “Image Backup Location”



### 4. Click Yes to save the settings and No to change the path



5. To run the backup, Click Run—Run Full Image Backup

